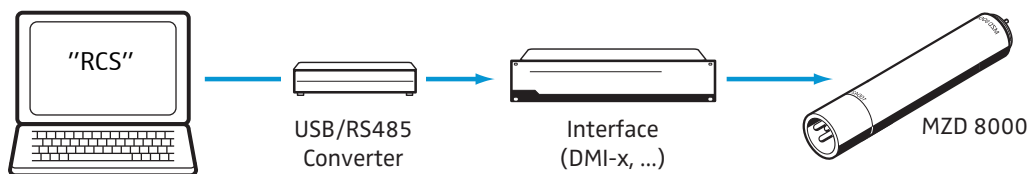


MZD 8000 Firmware Update

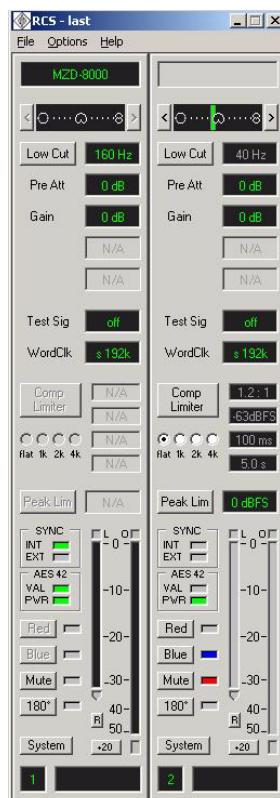
Firmware update with Neumann Interface and RCS software

- ▶ Interface (e.g. DMI-x by Georg Neumann GmbH)
- ▶ Software "RCS"
- ▶ System setup:



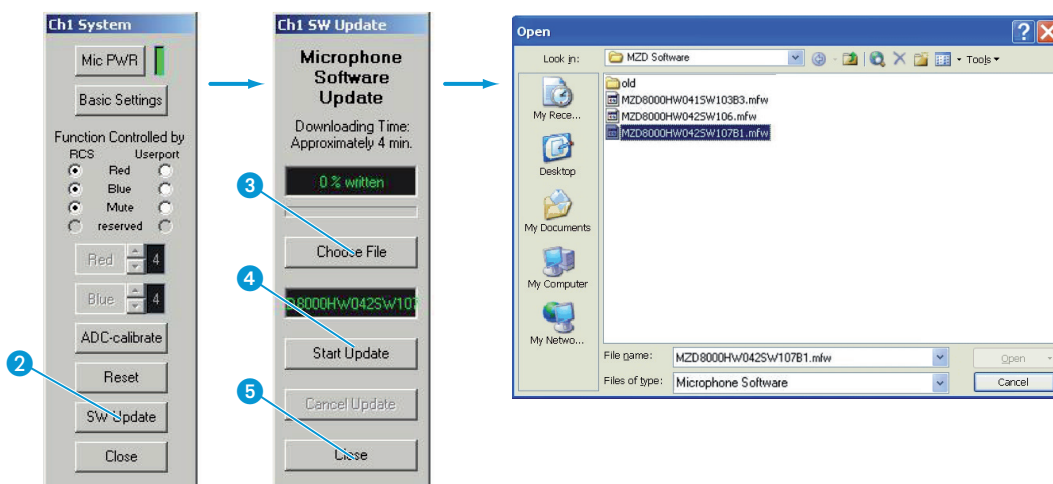
Execute firmware update

- ▶ Download the firmware file from the Sennheiser website, section „Service & Support“, „Software Download“.
- ▶ Unzip the "Sennheiser_Firmware_MZD8000_[...].zip" file alternatively save the "MZD8000[...].mfw" firmware file on your PC.
- ▶ Start the "RCS" software.
The application window is displayed:





- ▶ Click on the “System” button ① in the application window. The “System” window is displayed.



- ▶ Click on the “SW Update” button ②. The “SW Update” window is displayed.
- ▶ Click on the “Choose File” button ③. The “Open” window is displayed.
- ▶ Select the current update file (format .mfw).
- ▶ Click on the “Open” button.
- ▶ Click on the “Start Update” button ④. The software update starts, the progress is indicated in the “SW Update” window.



- ▶ When the software update is finished, the progress indicator shows “Download OK”:
- ▶ Close the “SW Update” window by clicking the “Close” button ⑤. You have successfully completed the software update of your MZD 8000.



The software update will not be effective until the “Close” button ⑤ is clicked. If you skip this last step the software update will NOT be completed and the previous firmware version will remain active.