



Sennheiser Documentation App



or online at
www.sennheiser.com/download
 evolution wired_



e 914

Quick Guide
 Kurzanleitung
 Guide rapide
 Guida rapida
 Guía de inicio rápido
 Guia rápido
 Beknopte handleiding
 Krótka instrukcja obsługi
 Snabbguide

Kvikstartguide
 Pikaohje
 Γρήγορος οδηγός
 Kısa Kılavuz
 Краткая инструкция
 快速指南
 快速使用指南
 クイックガイド
 퀵 가이드

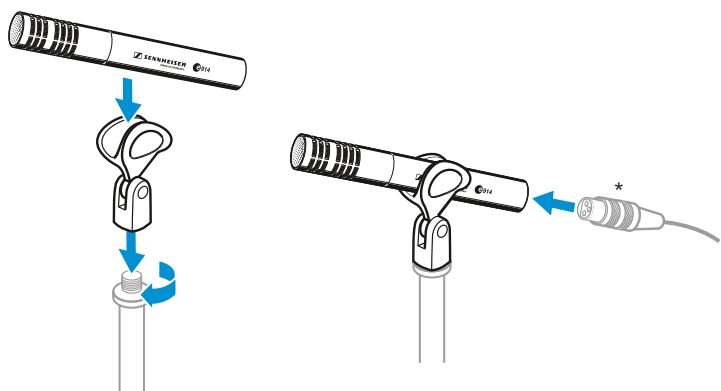
Sennheiser electronic GmbH & Co. KG

Am Labor 1, 30900 Wedemark, Germany
www.sennheiser.com

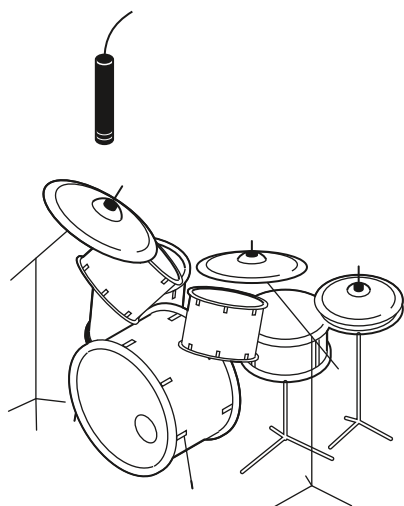
Publ. 06/19, 581337/A02

SENNHEISER

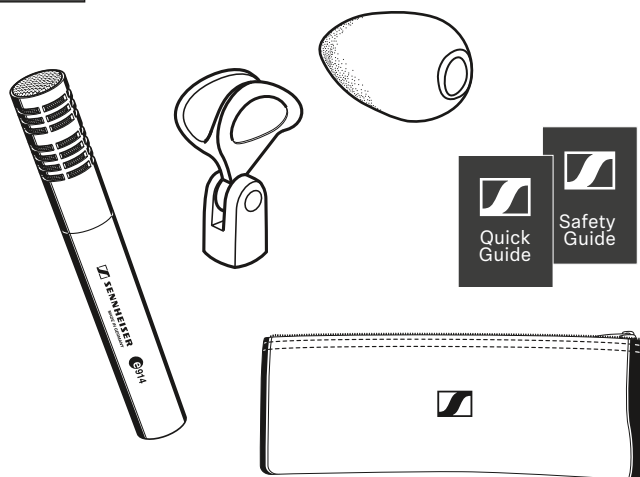
Setup



*XLR-3 cable not included

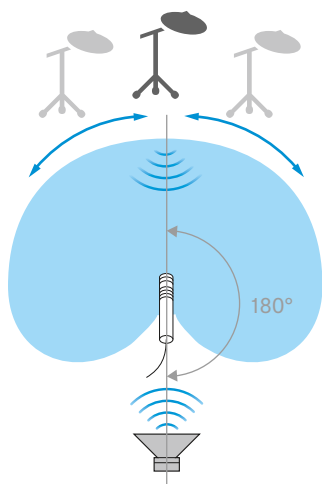
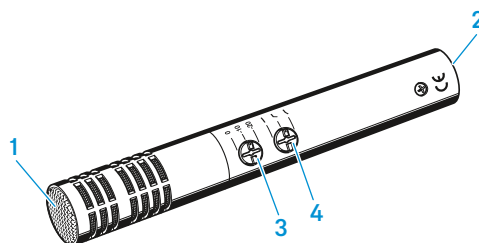


In the box

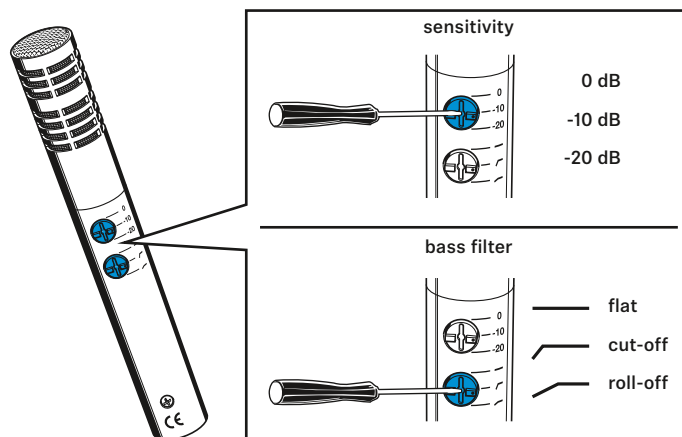


Overview

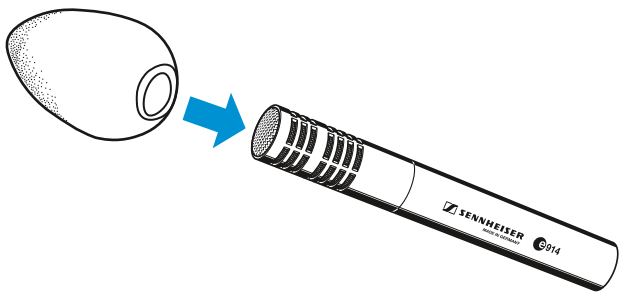
- 1 Sound inlet basket
- 2 XLR-3 connector
- 3 Adjusting
- 4 Adjusting the bass filter



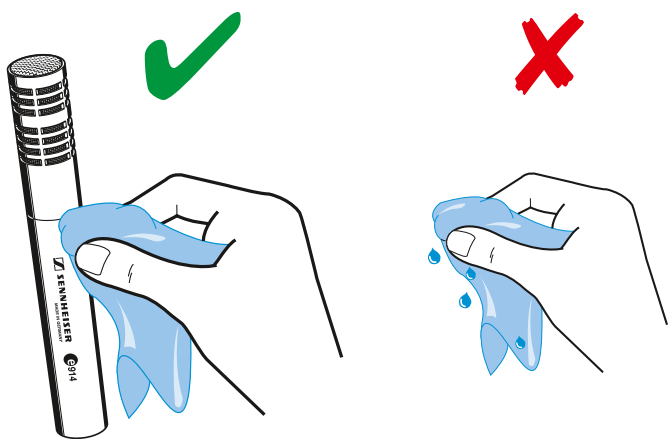
Adjusting



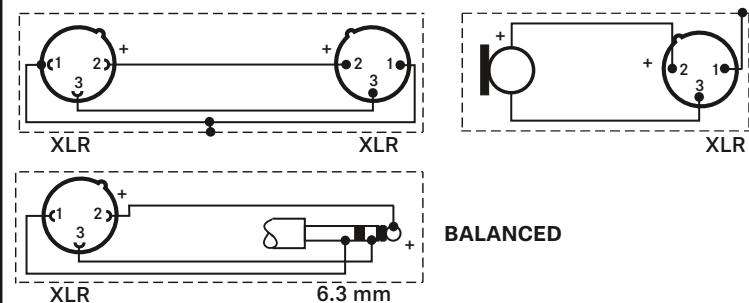
Using the windshield



Cleaning



Connector assignment



Specifications

Transducer principle	pre-polarized condenser microphone
Frequency response	20 - 20,000 Hz
Pick-up pattern	cardioid
Sensitivity (free field, at 1 kHz)	7 mV/Pa
with pre-attenuation	2.3 mV/Pa / 0.7 mV/Pa
Nominal impedance (at 1 kHz)	100 Ω
Min. terminating impedance	1 kΩ
Max. sound pressure level (at 1 kHz)	137/147/157 dB SPL (depending on pre-attenuation)
Equivalent noise level	
A-weighted (DIN IEC 651)	19 dB
CCIR-weighted (CCIR 468-3)	30 dB
Pre-attenuation	0 dB, -10 dB, -20 dB

Bass filter	linear roll-off 130 Hz, 6 dB/oct. cut-off 85 Hz, 18 dB/oct.
Phantom powering	48 V / 2.2 mA
Connector	XLR-3
Dimensions	∅ 24 x 157 mm
Weight	198 g

Polar pattern and frequency response

