



Release Date: 2018-10-31

Firmware Version 5.1

New Features:

Protected Channels

- Added the possibility to set passwords for channels and channel-groups. The password can be set-up via the admin interface in the Channels-Section.
- Use cases:
 - Limit the access to a channel for a defined number of users who know the password.
 - Make it impossible to access a channel from a different location.
 - Hide channels in a password protected channel-group.

Additional Information:

- In order to use the new feature “Protected Channels” the users have to update the MobileConnect or CinemaConnect App to the newest version 4.1.0
- Applicable in Standalone mode
 - The ConnectStation supports Ruckus firmware version 104.0.0.0.1347 and older (for Access Points R510, R500 and ZF7372).
 - The latest 110.0.0.0 firmware version for the R500 and R510 Access Points is not supported. It limits the maximum number of associated users and may affect the Access Point performance. In case you have it, we recommend to perform a downgrade to an older firmware version.

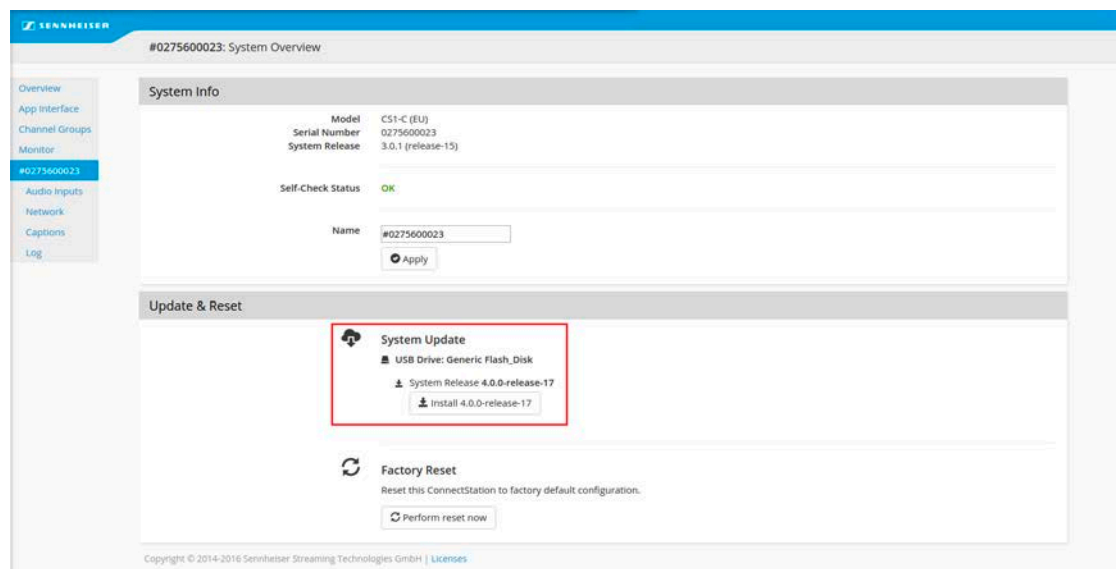


Updating the ConnectStation

Follow these steps for updating the system image of the ConnectStation to 3.0.0 and higher.

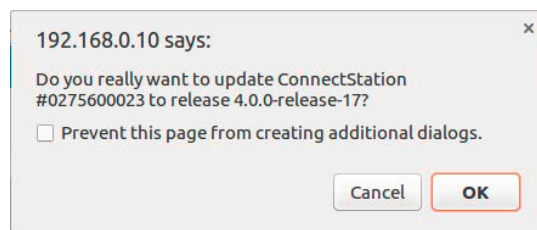
Please note: if you want to update multiple ConnectStations, always update them one at a time, not at the same time.

- ▷ Download the image from www.sennheiser.com/download to a **FAT/FAT32 formatted USB device**.
- ▷ Do not change the file name of the update file.
- ▷ Insert the USB device into one of the USB ports of the ConnectStation.
- ▷ The system image is displayed under “Update & Reset” in the System tab of the Admin Interface.



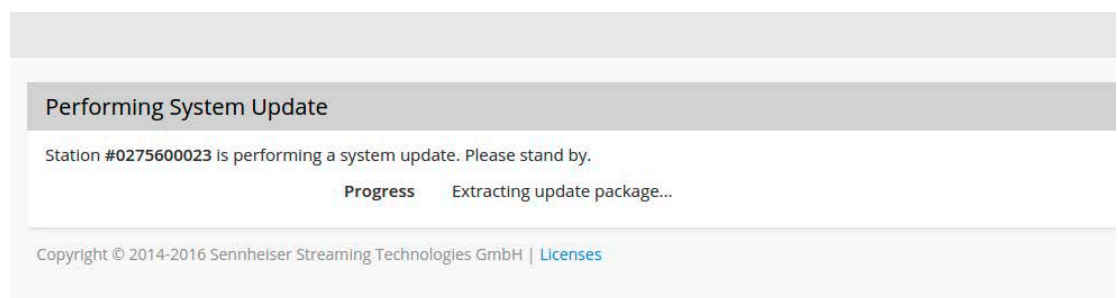
Admin interface version 3.0.x

- ▷ Click on **Install**.



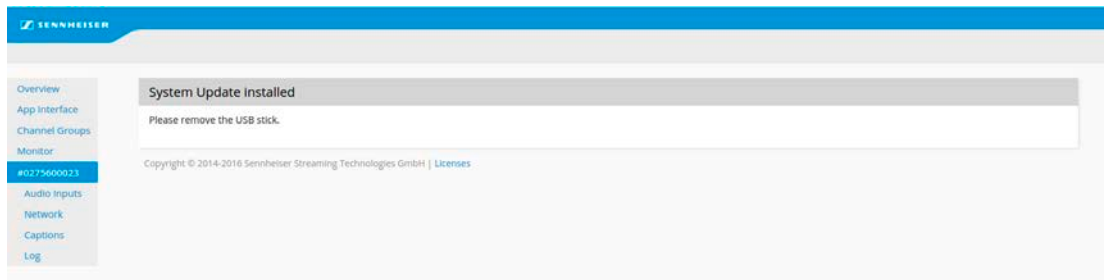
- ▷ Click **Yes** to confirm the update.

After the update has been installed, the following message is displayed.





- ▷ When the update is completed, remove the USB device.



- ▷ Click on **Restart Now** to restart the ConnectStation.



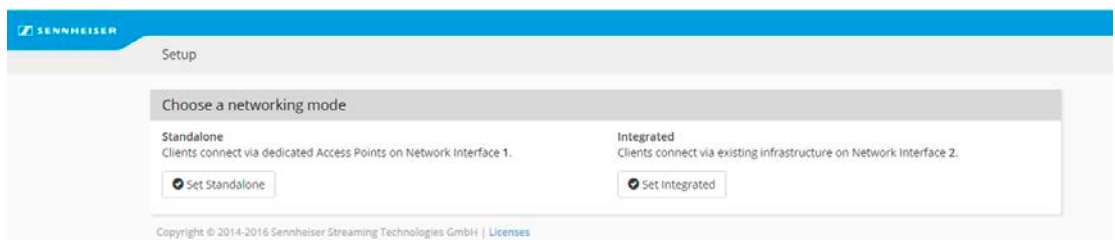
When the update is finished the system will redirect you to the admin interface.

- ▷ Perform an extra reload/refresh of the web page.

Update from 3.0.x: After the update, the ConnectStation will automatically select the previously used network mode. If you want to change the network mode, proceed as follows:

Update from 2.0.3: After the update, access the Admin Interface of the ConnectStation and perform a factory reset. Then select the desired network mode as follows:

- ▷ Perform a factory reset of the ConnectStation.
- ▷ Navigate to the Admin Interface at **192.168.0.10** and login with your user credentials.
- ▷ After a factory reset, the Admin Interface will automatically ask to select the network mode.



- ▷ Select the desired network mode.