



HS 2

Quick Guide | Kurzanleitung | Guide rapide | Guida rapida | Guía de inicio rápido | Guia rápido | Beknopte handleiding | Krótka instrukcja obsługi | Snabbguide | Kort vejledning | Pikaohje | Γρήγορος οδηγός | Kısa Kılavuz | Краткая инструкция | 快速指南 | 快速使用指南 | クイックガイド | 요약 설명서

In the box

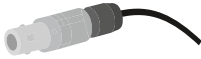
A



3.5 mm jack

or

B



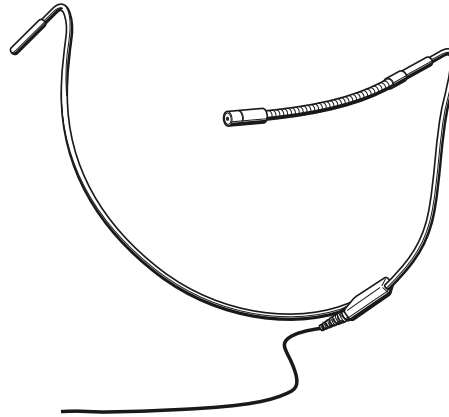
3-Pin

or

C

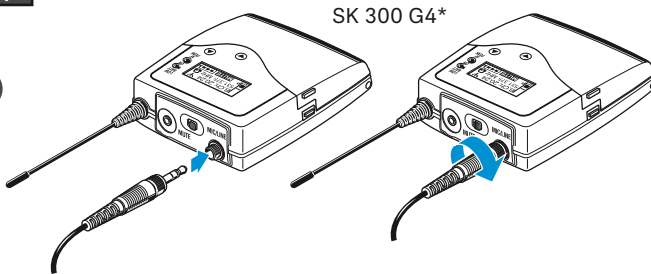


open-ended cable



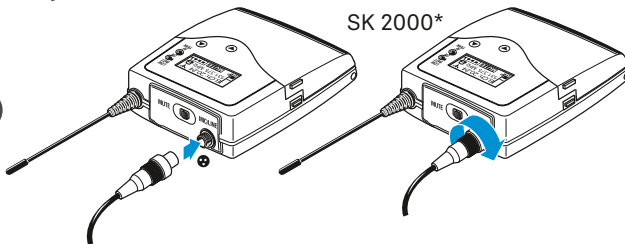
Setup

A



SK 300 G4*

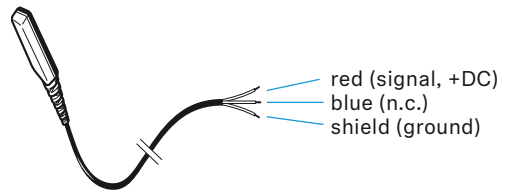
B



SK 2000*

C

Wiring assignment for adaption to 3.5 mm jack plug or special connector

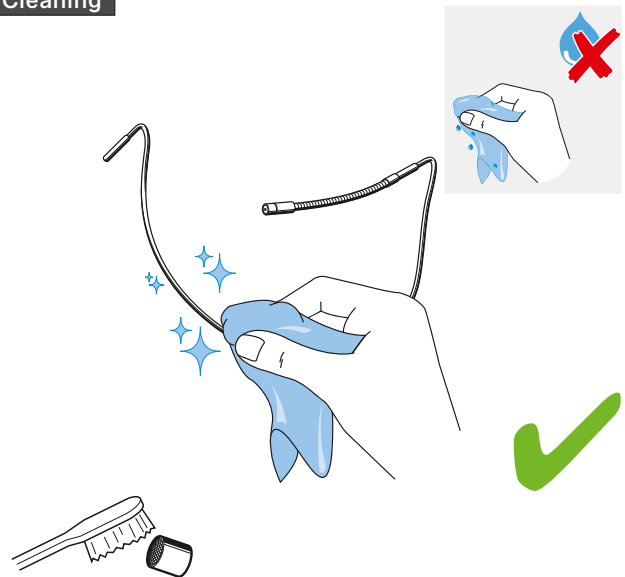


*sold separately

Use



Cleaning



Sennheiser electronic GmbH & Co. KG

Am Labor 1, 30900 Wedemark, Germany, www.sennheiser.com
Printed in Germany, Publ. 06/18, 581311/A01

Setup



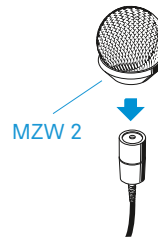
Frequency cap



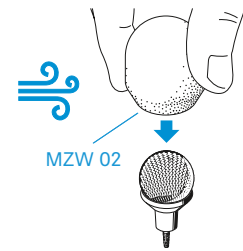
long cap: MZC 2-2
short cap: MZC 2-1



Windshields



- 20 dB
MZW 2

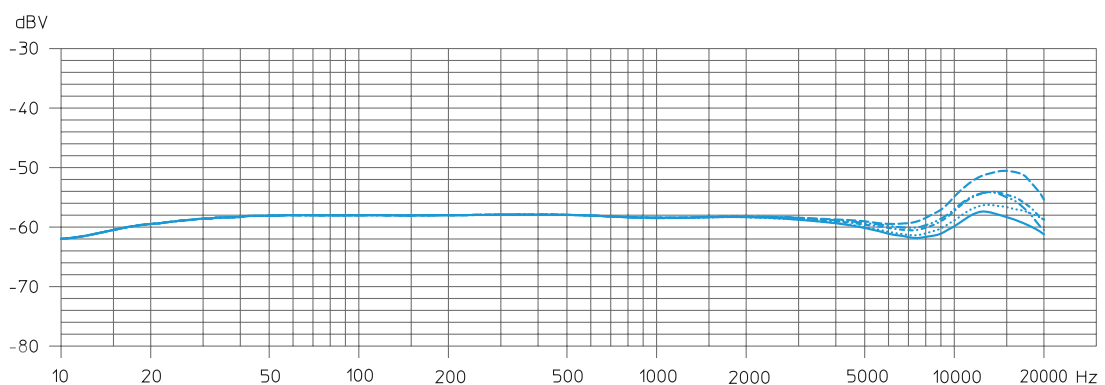


- 30 dB
MZW 2 + MZW 02

Specifications

Pick-up pattern	omni-directional
Frequency response	20 - 20,000 Hz
Sensitivity in free field	5 mV/Pa \pm 3 dB
Nominal impedance	1 k Ω
Min. terminating impedance	4.7 k Ω
Equivalent noise level:	
A-weighted (DIN IEC 651)	26 dB
CCIR-weighted (CCIR 468-1)	39 dB
Max. sound pressure level	142 dB
Power supply	18 k Ω / 7.5 V
Connector	3-Pin 3.5 mm jack open-ended cable
Cable length	1.6 m
Diameter of microphone	4.8 mm
Weight (HS 2 HS 2-EW HS 2-5)	34.4 g 34.4 g 29 g

Frequency response



Frequency response curves of the microphone
Microphone placed in the corner of the mouth, distance to the mouth 3 cm

- capsule only
- with MZC 2-1
- . - . - with MZC 2-2
- with MZW 2
- . - . - with MZW 2 and MZW 02