



# MM 435



Quick Guide	Kort vejledning
Kurzanleitung	Pikaohje
Guide de démarrage rapide	Γρήγορος οδηγός
Guía rápida	Kısa Kılavuz
Instrucciones resumidas	Краткая инструкция
Instruções resumidas	快速指南
Beknopte gebruiksaanwijzing	快速使用指南
Krótką instrukcja obsługi	クイックガイド
Snabbguide	퀵 가이드

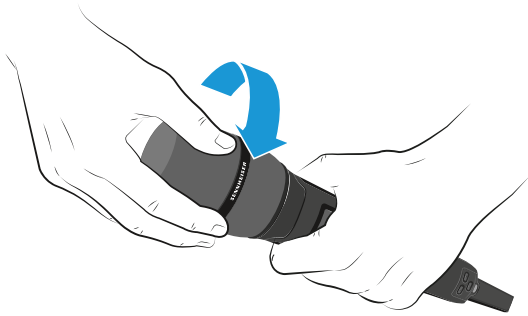
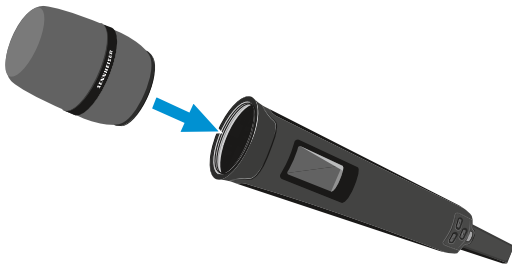
Sennheiser electronic GmbH & Co. KG

Am Labor 1, 30900 Wedemark, Germany  
www.sennheiser.com

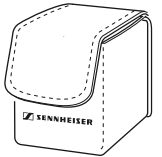
Printed in Germany  
Publ. 10/20, 583915/A02

## SENNHEISER

### Setup



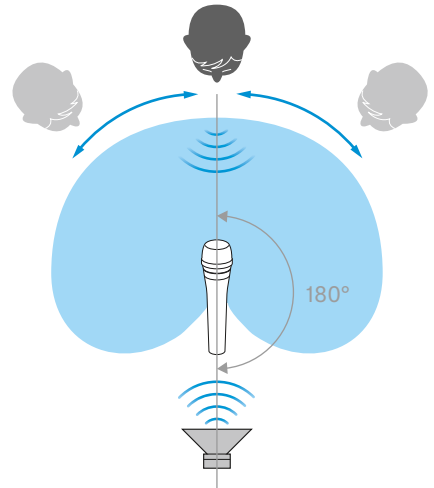
### In the box



1 x Protective cap



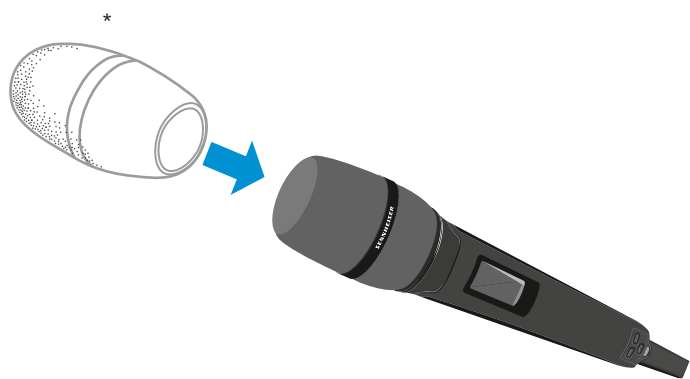
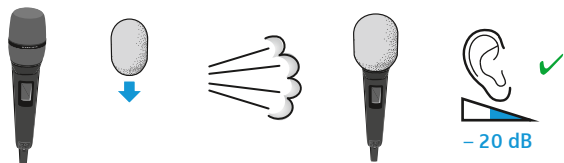
5 x Pop shield



## Accessories

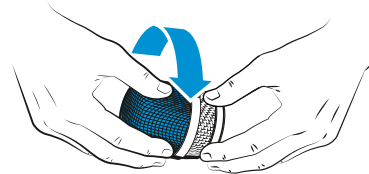
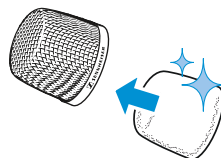
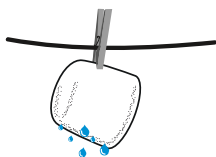
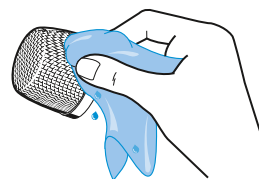
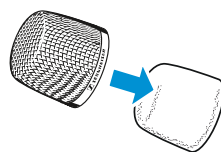
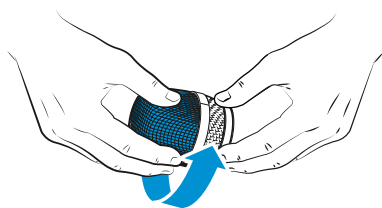


MZW 4023 / MZW 1



\*MZW 4032 / MZW 1 not included

## Cleaning



## Specifications

Transducer principle	dynamic
Frequency response	40 - 20,000 Hz
Pick-up pattern	cardioid
Sensitivity (free field, at 1 kHz)	1.8 mV/Pa
Max SPL at 1 kHz	163 dB
Dynamic range	146 db (A)
Dimensions	∅ 51 x 72.5 mm
Weight	119 g

## Compatible with

ew G4:	SKM 100, SKM 300, SKM 500
2000 series:	SKM 2000
Digital 6000:	SKM 6000
Digital 9000:	SKM 9000

## Polar pattern and frequency response

