



SpeechLine Digital Wireless SL Rack Receiver DW

FEATURES

- Automatic frequency and interference management
- Speech optimized automatics and sound profiles
- Clear and easy focused user interface with OLED display
- Ethernet connectivity (IPv4 and IPv6)
- Media control protocol integration
- Secure 256 bit AES encryption
- Remote controllable via Sennheiser Control Cockpit
- Quick setup pairing process



The half 19" stationary SL Rack Receiver DW is the easy-to-integrate core of the SpeechLine Digital Wireless System. It features a clear visible OLED display for easy setup and operation. Thanks to the bi-directional communication all settings of the mobile transmitters can be adjusted from the receiver side. The automatic frequency and interference management allows convenient and reliable operation. Thanks to the easy-to-handle pairing process, the transmitter and receiver are securely linked. Via network integration all settings and statuses are also accessible via AMX/Crestron media control protocol and the dedicated Sennheiser Control Cockpit software. The antennas can be either back or front-mounted. Furthermore, extension cables for wall mounting are available.

SPECIFICATIONS

| | |
|-----------------------|--|
| AF frequency response | 20 to 20,000 Hz |
| Dynamic range | > 120 dB(A) |
| THD (1 kHz) | typ. 0.1 % |
| Audio sampling | 24 bit/48 kHz |
| Signal-to-noise ratio | > 90 dB(A) |
| Encryption | AES 256 |
| RF frequency ranges | EU: 1,880 to 1,900 MHz USA: 1,920 to 1,930 MHz Brazil: 1,910 to 1,920 MHz Taiwan: 1,880 to 1,895 MHz Japan: 1,893 to 1,906 MHz |
| Modulation | GFSK with back channel |
| Transmission method | TDMA, space diversity |
| Latency | 19 ms |
| Relative air humidity | max. 95 % |
| Temperature range* | Operation: -10 °C to 55 °C (14 °F to 131 °F) Storage: -20 °C to 70 °C (-4 °F to 158 °F) |

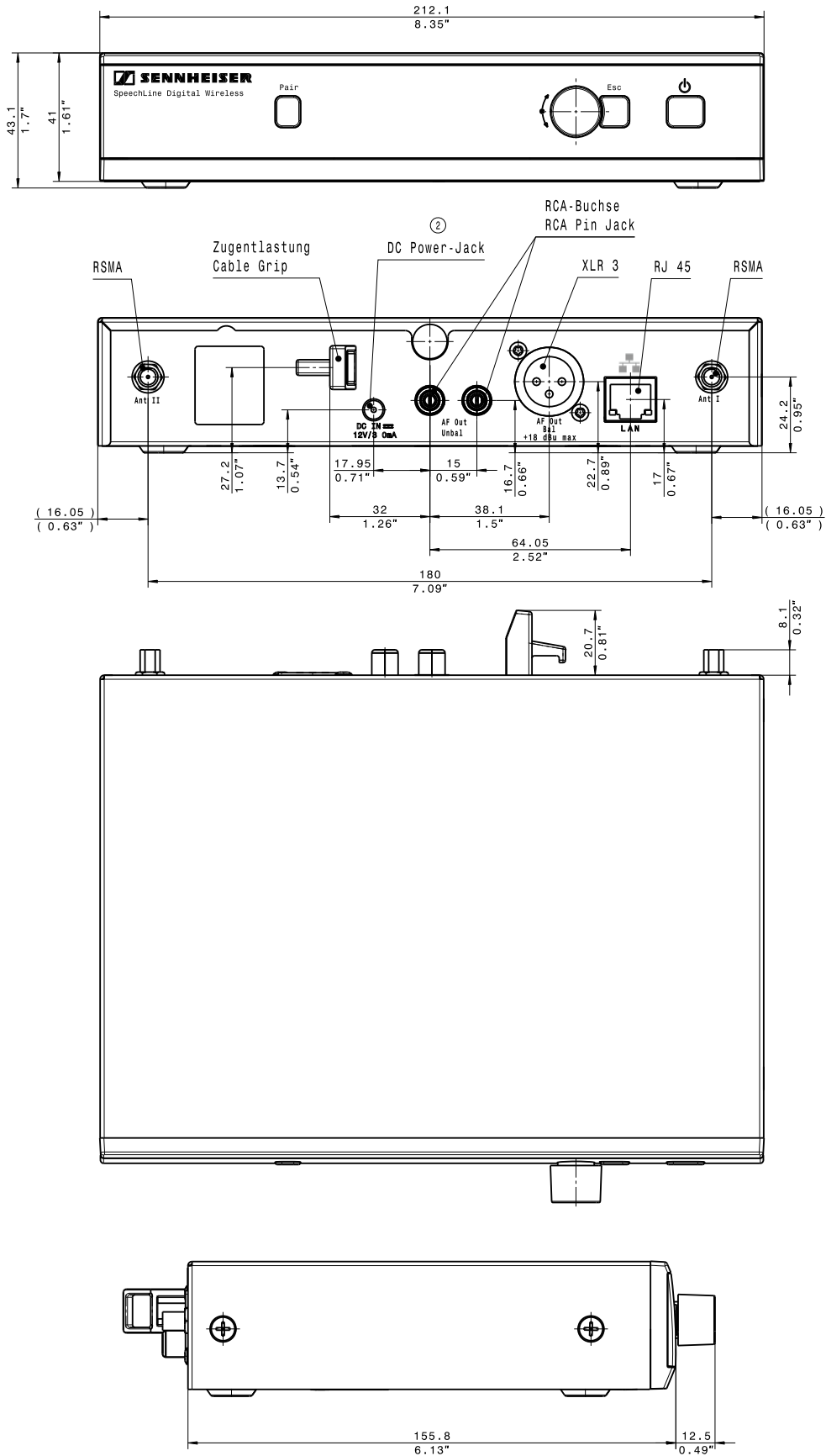
* The temperature range is influenced by the battery characteristics

| | |
|------------------------------|--|
| RF sensitivity | < -90 dBm |
| RF output power back channel | adaptive, up to 250 mW (country-specific) |
| XLR output level, balanced | max. +18 dBu |
| RCA output level, unbalanced | max. +6 dBu |
| Audio effects | Low cut: -3 dB at 120 Hz Equalizer: 7-band graphic equalizer with sound presets |
| Sound profiles: | - female voice - male voice - instrument/media |
| Display | OLED |
| Network protocol | Media Control Protocol, TCP/IP IPv4 (DHCP, manual)/IPv6 |
| Power supply | 12 V DC |
| Current consumption | 350 mA |
| AF connection sockets | XLR/2 x RCA |
| Antenna sockets | 2 x reverse SMA |
| Network sockets | RJ-45 |
| DC socket for power supply | hollow jack |
| Weight | approx. 828 g |



SpeechLine Digital Wireless SL Rack Receiver DW

DIMENSIONS





SpeechLine Digital Wireless SL Rack Receiver DW

ARCHITECT'S SPECIFICATION

The stationary receiver shall be for use with a companion transmitter as part of a wireless RF transmission system.

The receiver shall operate in the license-free 1.9 GHz band (frequency ranges shall be from 1,880 to 1,930 MHz, depending on country-specific regulations) and shall use automatic frequency management to find and select the best available frequency in the spectrum and to automatically start the transmission.

The receiver shall also incorporate automatic interference management, allowing it to inaudibly and seamlessly change to another frequency if any interference is detected. Time Division Multiple Access (TDMA) and space diversity shall be used to provide for increased transmission reliability.

The receiver shall be menu-driven and shall have an OLED display showing the name of the wireless link, selected sound profile, de-esser and Automatic Gain Control (AGC) settings, AF level, RF signal level, lock status, transmitter mute switch status, transmitter RF output power, and transmitter battery status. The receiver shall be fitted with a jog dial for menu navigation and shall feature dedicated pairing, escape and power buttons.

The receiver shall provide a low-cut filter, speech-optimized sound profiles and a 7-band graphic equalizer for custom audio settings.

The receiver's AF frequency response shall range from 20 – 20,000 Hz. The dynamic range shall be > 120 dB(A). Total harmonic distortion (THD) at 1 kHz shall be typical 0.1 %. Signal-to-noise ratio shall be > 90 dB(A). The receiver's RF sensitivity shall be -90 dBm. RF output power of the receiver's back channel shall be adaptive and up to 250 mW (country-specific).

The audio output shall utilize a balanced XLR-3M socket with a maximum output of +18 dBu along with two unbalanced RCA sockets with a maximum output of +6 dBu. The receiver shall feature automatic gain optimization. Two reverse SMA sockets shall be provided for connecting the antennas.

The receiver shall have an RJ-45 network socket and shall support IPv4 and IPv6 network addressing. In addition, the receiver shall support the Media Control Protocol to provide for remote control and status monitoring directly from a software solution like the Sennheiser Control Cockpit or a media control system (e.g. Crestron and AMX).

The receiver shall operate on 12 V DC power supplied from the NT 12-4C power supply unit (100-240 V AC, 50/60 Hz, for use in the USA, the UK, and Europe) or the NT 2-3 power supply unit (100-240 V AC, 50/60 Hz, for use in countries other than the USA, the UK, and Europe). Power consumption shall be 350 mA. The dimensions shall be approximately 168 x 212 x 43 mm (6.61" x 8.35" x 1.69"). Weight shall be approximately 828 grams (1.83 lbs). Operating temperature shall range from -10 °C to +55 °C (+14 °F to +131 °F).

The receiver shall be the Sennheiser SL Rack Receiver DW.



SpeechLine Digital Wireless SL Rack Receiver DW

ACCESSORIES

| | | | | | |
|--------------|--------------------|-----------------|-----------------|--------------------|-----------------|
| GA 4 | Rackmount set | Art. No. 505977 | AWM 4 | Wallmount antenna | Art. No. 507358 |
| | | | CL 1 PP | Antenna cable 1 m | Art. No. 507425 |
| AWM 2 | Wallmount antenna | Art. No. 505981 | CL 5 PP | Antenna cable 5 m | Art. No. 507426 |
| CL 5 | Antenna cable 5 m | Art. No. 505976 | CL 10 PP | Antenna cable 10 m | Art. No. 507427 |
| CL 10 | Antenna cable 10 m | Art. No. 506263 | CL 20 PP | Antenna cable 20 m | Art. No. 507428 |
| CL 20 | Antenna cable 20 m | Art. No. 506264 | | | |

PRODUCT VARIANTS

SL Rack Receiver
DW-3-EU

Art. No. 505882

-3 EU variant

1,880 to 1,900 MHz

EU power supply

Europe

India

Indonesia

SL Rack Receiver
DW-3-UK

Art. No. 505892

-3 UK variant

1,880 to 1,900 MHz

UK power supply

UK

Hong Kong

Singapore

Malaysia

SL Rack Receiver
DW-3-AU

Art. No. 506164

-3 AU variant

1,880 to 1,900 MHz

AU power supply

Australia

SL Rack Receiver
DW-4-EU

Art. No. 506171

-4 EU variant

1,920 to 1,930 MHz

EU power supply

Latin America

SL Rack Receiver
DW-4-US

Art. No. 505899

-4 US variant

1,920 to 1,930 MHz

US power supply

USA

Canada

SL Rack Receiver
DW-5-US

Art. No. 505919

-5 US variant

1,893 to 1,906 MHz

US power supply

Japan

SL Rack Receiver
DW-6-US

Art. No. 505909

-6 US variant

1,880 to 1,895 MHz

US power supply

Taiwan

SL Rack Receiver
DW-7-BR

Art. No. 506703

-7 BR variant

1,910 to 1,920 MHz

BR power supply

Brazil