



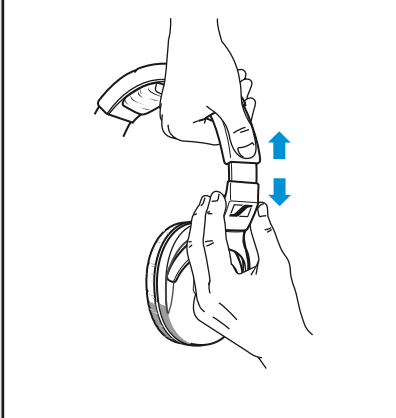
# HD 300 PRO / PROtect

**Quick Guide** | Kurzanleitung | Guide rapide | Guida rapida | Guía de inicio rápido | Guia rápido | Beknopte handleiding | Krótka instrukcja obsługi | Snabbguide | Kort vejledning | Πίκαοήγε | Γρήγορος οδηγός | Kisa Kilavuz | Краткая инструкция | 快速指南 | 快速使用指南 | クイックガイド | 요약 설명서

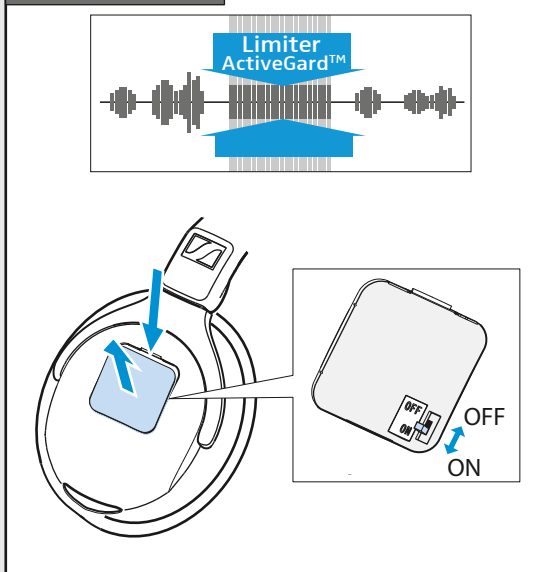
## In the box



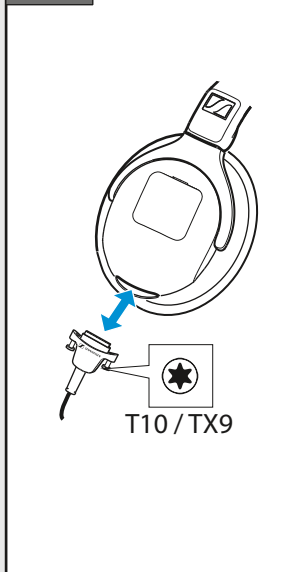
## Adjusting



## HD 300 PROtect



## Cable



Sennheiser electronic GmbH & Co. KG

**SENNHEISER**

Am Labor 1, 30900 Wedemark, Germany, [www.sennheiser.com](http://www.sennheiser.com)  
Printed in Germany, Publ. 07/18, 578649/A01

## Specifications

### Headphone HD 300 PRO / HD 300 PROtect

Acoustic principle	dynamic, closed
Ear coupling	circumaural
Frequency response	6 - 25,000 Hz
Impedance	64 $\Omega$
Power rating	500 mW
Sensitivity	108 $\pm$ 3 dB SPL / 1 V <sub>rms</sub> / 1 kHz

#### HD 300 PRO

Max. SPL w/o ActiveGard 123 dB SPL @ 1 kHz

#### HD 300 PROtect

Max. SPL ActiveGard off 123 dB SPL @ 1 kHz

Max. SPL ActiveGard on 110 dB SPL @ 1 kHz

Ambient noise attenuation  $\leq$ 32 dB

Distortion  $<$ 0.1% @ 1 kHz, 94 dB SPL

Contact pressure approx. 6.0 N

Weight (w/o cable) approx. 297 g

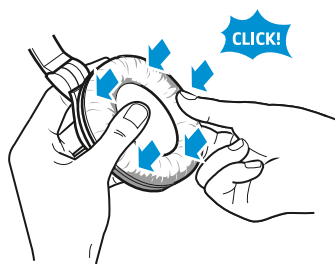
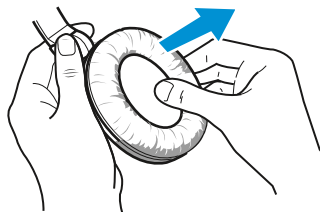
Cable length approx. 1.55 m

Temperature Operation: -15 °C .... +55 °C

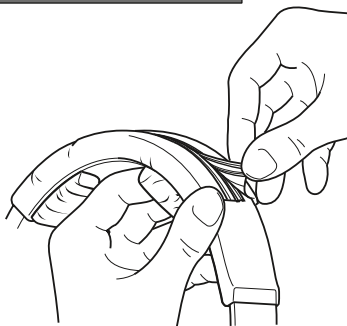
Storage: -55 °C .... +70 °C

Relative humidity  $\leq$ 90%

## Ear cushions



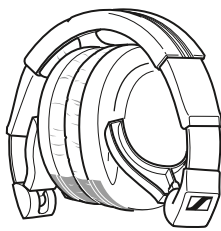
## Headband padding



## Transport positions



OR



OR

