

For further information | Für weitere Informationen  
Pour plus d'informations | Yderligere information

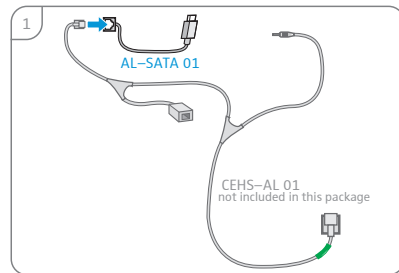


For support go to  
[www.sennheiser.com/cco/support](http://www.sennheiser.com/cco/support)

Sennheiser Communications A/S  
Industriparken 27, DK-2750 Ballerup, Denmark  
[www.sennheiser.com](http://www.sennheiser.com) | Printed in China, Publ. 03/15, A02

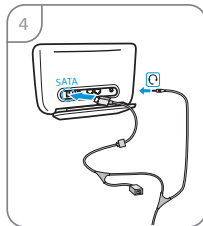
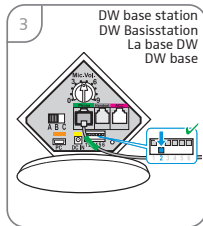
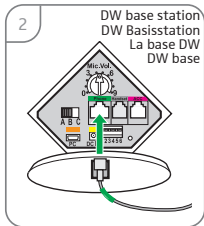
## AL-SATA 01 To be used with CEHS-AL 01

- EN** Alcatel-Lucent adapter cable for CEHS-AL 01 electronic hook switch cable  
▶ Before connecting the adapter cables, disconnect the base station from the mains.
- DE** Alcatel-Lucent Adapterkabel für das elektronische Fernabnehmerkabel CEHS-AL 01  
▶ Trennen Sie die Basisstation vom Netz, bevor Sie die Adapterkabel anschließen.
- FR** Câble adaptateur Alcatel-Lucent pour le décrocheur à distance électronique CEHS-AL 01  
▶ Débranchez la base du secteur avant de raccorder les câbles adaptateur.
- DA** Alcatel-Lucent adapterkabel til CEHS-AL 01 elektronisk rørløfterkabel  
▶ Sluk strømmen til basestationen før kabelmontering.

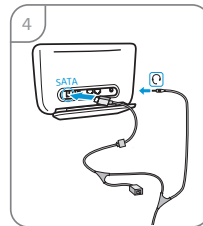
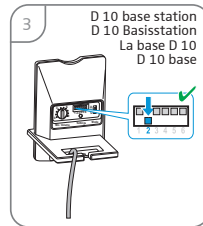
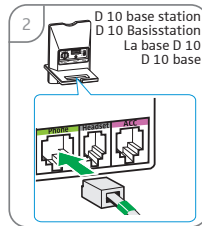


Base station settings:  
see next page >>>

## DW series



## D 10 series



## SD series

