



Dante™ Kit MEG 14-40-L-II

FEATURES

- Great speech intelligibility
- Phantom power via PoE
- Remote controllable gain level
- Daisy-chaining possible

DELIVERY INCLUDES

- 1 SL DI 4 XLR Dante™ interface
- 4 MAT 153-S tablestands
- 4 MEG 14-40-L-II gooseneck microphones



The MAT 153-S with the MEG 14-40-L-II is as versatile as it is easy to operate. Experience clearly structured meetings and discussions as the intuitive handling will lead the focus on the content – not the technology. Both, the clearly visible LED ring and the prominent microphone button make great sound performance easily accessible. The proven Sennheiser KE 10 capsule provides best speech intelligibility.

Powered by the SL DI 4 XLR with just a standard XLR 3 cable, both microphone and LEDs are integrated in a bigger setup with a finger snap and make even spontaneous discussion setups possible.

The SL DI 4 XLR four input Dante™ preamp is the ideal interface for wireless microphone receivers. As analog to digital audio converter, it allows for adding analog microphone systems to a Dante™ system. All Sennheiser XLR microphones and all wireless microphone receivers as well as all SpeechLine Wired installation microphones are compatible with the SL DI 4 XLR.

PRODUCT VARIANTS

Dante Kit MEG 14-40-L-II

Art. no. 508210



Dante™ Kit MEG 14-40-L-II

SPECIFICATIONS

SL DI 4 XLR




Audio Inputs	
Input type	Balanced and RF filtered
Gain	0 dB, +15 dB, + 30 dB, +45 dB, software selectable 10 dB pad, software selectable
Input impedance	> 1.8 KΩ @ any gain
Maximum input levels	+18 dBu @ 0 dB gain, with pad +8 dBu @ 0 dB gain, no pad -7 dBu @ +15 dB gain, no pad -22 dBu @ +30 dB gain, no pad -36 dBu @ +45 dB gain, no pad
Phantom power	+48 V, 10 mA per input, software selectable
Audio performance	
EIN	-113 dBu
System THD+N	< 0.02 % @ any gain input signal 3 dB below maximum
Frequency response	20 Hz - 20 kHz

MAT 153-S

Phantom power	P24
Current consumption	3.7 mA
Connectors	Mic In - XLR-5F Mic Out - XLR-3M
Pin assignment out	XLR-3M out: 1 = gnd 2 = Audio + 3 = Audio -
Pin assignment in	XLR-5F in: 1 = gnd 2 = Audio + 3 = Audio - 4 = LED 5 = LED (+)
LED light ring color	red/green
Microphone modes	Toggle on / off Push to mute Push to talk permanent on
Connection	clip contact for logic

Dante™ network	
Physical level	Standard Ethernet
Connector	Single RJ-45
Cable quality	CAT-5
Transmission speed	100 Mbps
Daisy chain	2 units when powered by 802.3af PoE 3 units when powered by external +12 V DC power supply (Sennheiser NT 12-50CS)

Product properties	
Power requirements	Class 0 802.3af PoE PD compliant +12 V DC
Power consumption	2.7 W (225 mA) @ +12 V DC, no phantom power 5.5 W (460 mA) @ +12 V DC, 10 mA phantom power load per input
Dimensions (W x H x D)	219 x 38 x 120 mm (8.63" x 1.50" x 4.74")
Weight	0.77 kg (1.7 lbs)
Operating temperature	0 °C - 40 °C (32 °F - 104 °F)

Pin assignment logic connector	trigger signal at the logic connector:
	 Logic in (external LED control)
	 GND
	 Logic out (switch signal)
Weight	1,210 g
Dimensions (W x D x H)	120 x 170 x 43 mm (4.72" x 6.69" x 1.69")
Operating temperature	-10 °C to +50 °C (+14 °F to +122 °F)



Dante™ Kit MEG 14-40-L-II

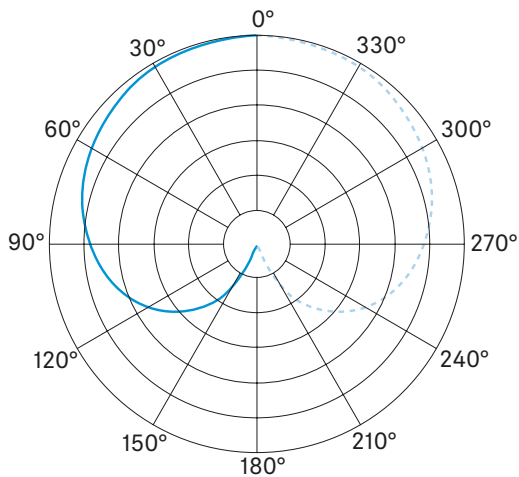
SPECIFICATIONS

MEG 14-40-L-II

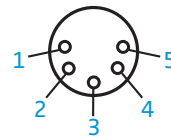
Pick-up pattern	cardioid
Frequency response	50 Hz - 20 kHz
Acoustic principle	gooseneck microphone (condenser)
Output impedance @ 1 kHz	< 100 Ω
Sensitivity	15 mV/Pa
Max. sound pressure level	130 dB @ 1 kHz < 3 %
Equivalent noise level	37 dB (CCIR) 26 dB (A)

Power supply microphone	12 V - 48 V phantom power (P12 - P48)
Current consumption	3 mA
Power supply signal light ring	12 - 30 V DC 1 - 18 mA green
Connector	XLR-5M
Operating temperature	0 °C to 40 °C (32 °F to 104 °F)
Storage temperature	-25 °C to 70 °C (-13 °F to 158 °F)

POLAR DIAGRAM MEG 14-40-L-II

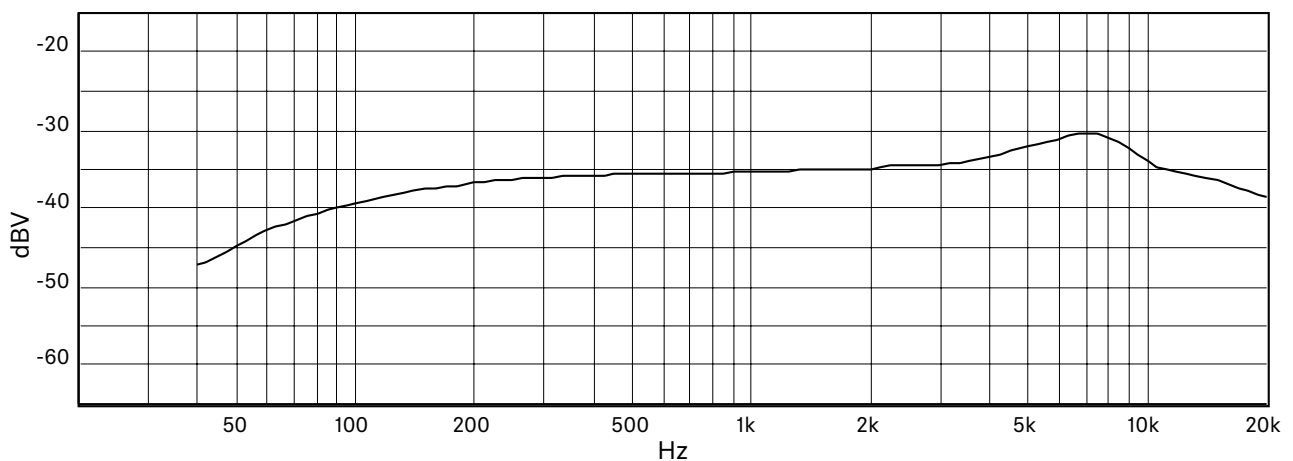


PIN ASSIGNMENT MEG 14-40-L-II



- 1 Microphone Ground
- 2 Microphone +
- 3 Microphone -
- 4 LED Ground
- 5 LED: 12 - 30 V

FREQUENCY RESPONSE MEG 14-40-L-II

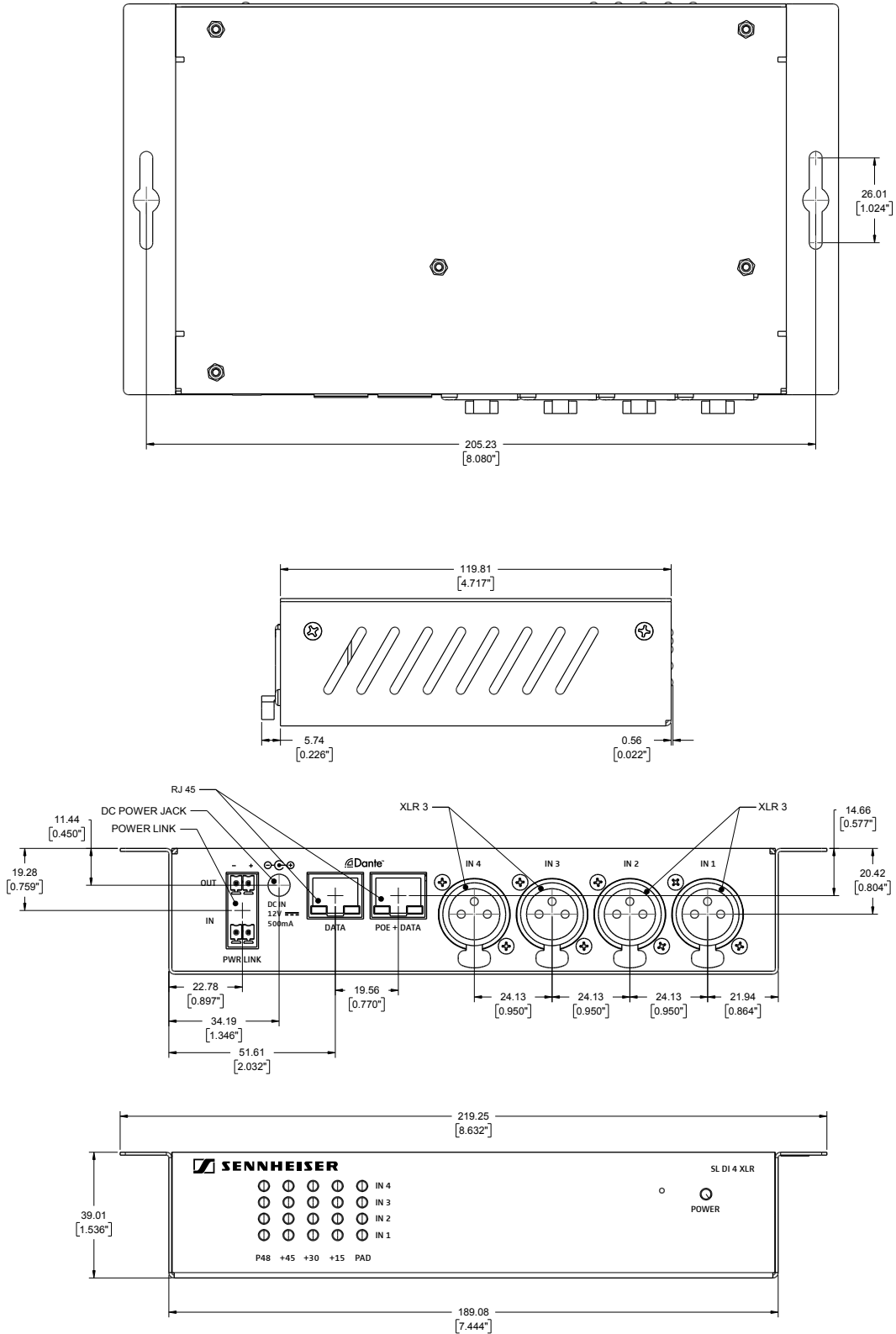




Dante™ Kit MEG 14-40-L-II

DIMENSIONS

SL DI 4 XLR

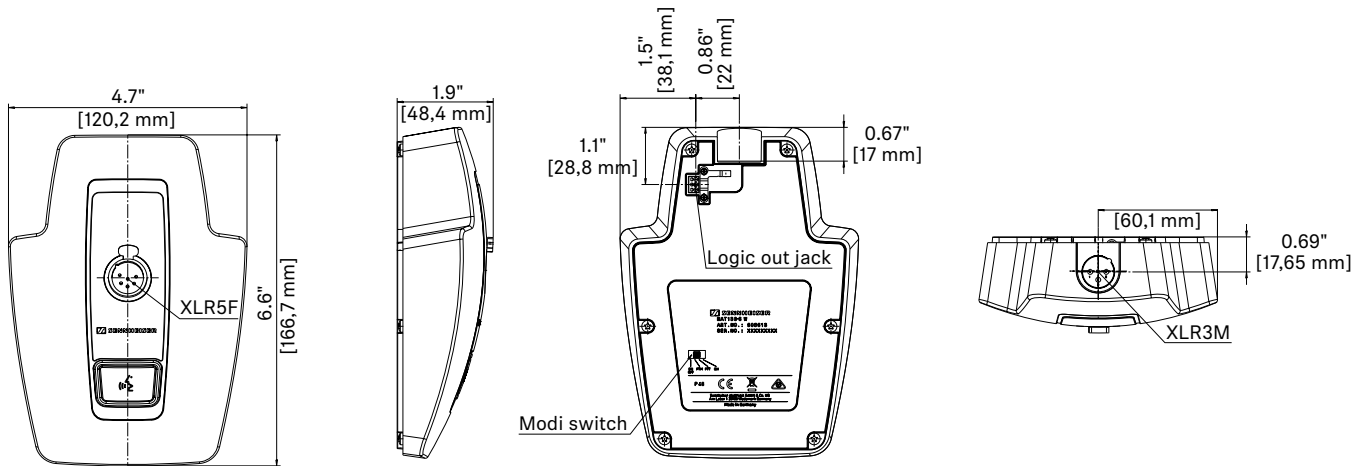




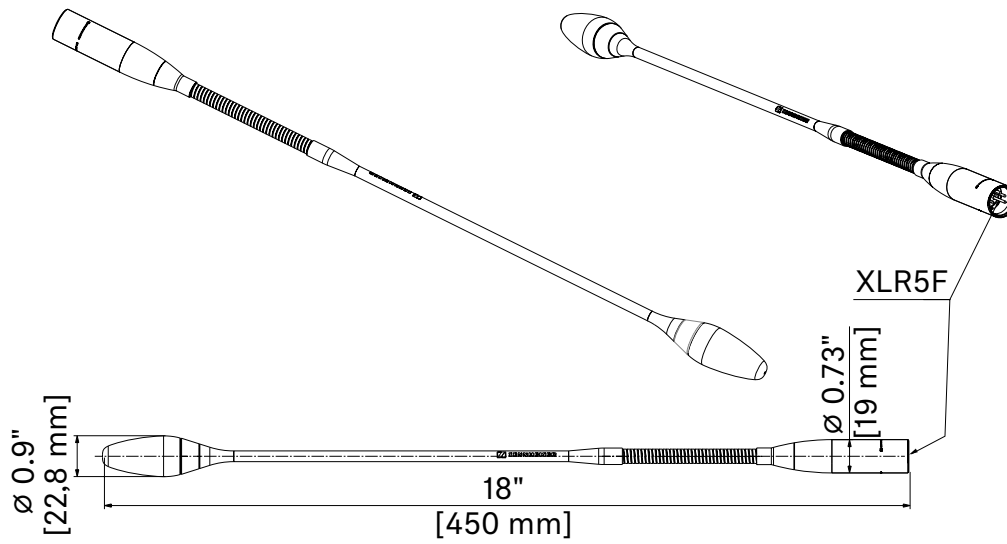
Dante™ Kit MEG 14-40-L-II

DIMENSIONS

MAT 153-S



MEG 14-40-L-II





Dante™ Kit MEG 14-40-L-II

ARCHITECT'S SPECIFICATION

The Dante™ interface shall feature four balanced and RF filtered mic/line inputs on female XLR-3 connectors and two RJ-45 Ethernet connectors to allow Dante™ daisy chaining (DDC) of multiple units.

Audio frequency response shall range from 20 – 20,000 Hz. Input impedance shall be > 1.8 kΩ at any gain setting. Equivalent input noise shall be -113 dBu. The Dante™ interface shall be powered over the CAT5 Ethernet cable from an 802.3af PoE compliant network switch or from an external +12 V DC power supply. The unit shall support daisy chaining of two units when powered via PoE and shall accept daisy chaining of up to three units when powered via an external +12 V DC power supply. Power consumption shall be 2.7 W (225 mA) @ +12 V DC without phantom power and 5.5 W (460 mA) @ +12 V DC with a 10 mA phantom power load per input.

The Dante™ interface shall have a rugged metal housing with integrated mounting brackets; dimensions (W x H x D) shall be 219 x 38 x 120 mm (8.63" x 1.50" x 4.74"). Weight shall be 0.77 kg (1.7 lbs). Operating temperature shall range from 0 °C to 40 °C (32 °F to 104 °F).

The Dante™ interface shall be the Sennheiser SL DI 4 XLR.

The tablestand for connecting and operating XLR gooseneck microphones shall be rugged and unobtrusive. It shall have a programmable microphone button (Toggle on/off, PTM, PTT and permanent on) and a bi-color LED ring for status indication shall be provided.

The tablestand shall feature an XLR-5F microphone input, an XLR-3M microphone output and a TTL logic connector with logic inputs and outputs. The logic output voltage shall be high level > 2.4 and low level < 0.4 V, the logic input voltage shall be high level > 2.0 V and low level < 0.8 V.

The tablestand shall operate on 48 V phantom power. Current consumption shall be 3.7 mA. Dimensions shall be 120 x 170 x 43 mm (4.72" x 6.69" x 1.69"). Weight shall be 1,210 grams (42.68 oz). Operating temperature shall range from -10 °C to +50 °C (+14 °F to +122 °F).

The tablestand shall be the Sennheiser MAT 153-S.

The microphone shall be a pre-polarized condenser designed for permanent installation or portable applications. It shall have a microphone capsule with a cardioid polar pattern with uniform 120° angle of acceptance (-3 dB). The microphone shall include a lighted ring below the capsule for indicating the activity of the microphone.

It shall have a frequency response of 50 Hz to 20,000 Hz and be capable of handling sound input levels up to 130 dB SPL. Nominal equivalent noise level shall be 26 dBA (37 dB weighted as per CCIR 468-3). Output shall be low impedance balanced (< 100 Ω). Operating temperature shall be 0 °C to 40 °C (32 °F to 104 °F). The microphone shall operate from an external 12 V to 48 V DC phantom power source; current consumption shall be 3 mA. The lighted LED ring shall operate from an external 12 – 30 V DC power source; current consumption shall be 3 mA. The microphone shall offer radio frequency interference (RFI) shielding against intermodulation from wireless equipment or devices.

The microphone shall be a gooseneck design ensuring precise alignment of the microphone. It shall incorporate a self-contained power module with an XLR 5M connector at the base, which includes connection for the lighted ring power. The microphone shall be a small-diameter gooseneck design with a diameter of 8 mm (0.31") and an overall length of 457.2 mm (18"). Head diameter shall be 22.8 mm (0.9"). The microphone weight shall be 147 g (4.72 oz). Finish shall be matte black.

The microphone shall be Sennheiser MEG 14-40-L-II.