



## Dante™ Kit MEB 114-S

### FEATURES

- Great speech intelligibility
- Phantom power via PoE
- Remote controllable gain level
- Daisy-chaining possible

### DELIVERY INCLUDES

- 1 SL DI 4 XLR Dante™ interface
- 4 MEB 114-S boundary layer microphones



The MEB 114-S is a sturdy on-table boundary layer microphone that constitutes an improvement for any conferencing system. It features a programmable microphone button and a bi-color LED ring for status indication.

Thanks to its rugged housing and its high-quality microphone capsule the MEB 114-S ensures the best speech intelligibility.

The SL DI 4 XLR four input Dante™ preamp is the ideal interface for wireless microphone receivers. As analog to digital audio converter, it allows for adding analog microphone systems to a Dante™ system. All Sennheiser XLR microphones and all wireless microphone receivers as well as all SpeechLine Wired installation microphones are compatible with the SL DI 4 XLR.

### PRODUCT VARIANTS

Dante Kit MEB 114-S

Art. no. 508207



# Dante™ Kit MEB 114-S

## SPECIFICATIONS

### SL DI 4 XLR



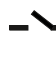
| Audio Inputs         |   |
|----------------------|---|
| Input type           | Balanced and RF filtered  |
| Gain                 | 0 dB, +15 dB, +30 dB, +45 dB, software selectable<br>10 dB pad, software selectable   |
| Input impedance      | > 1.8 K $\Omega$ @ any gain   |
| Maximum input levels | +18 dBu @ 0 dB gain, with pad<br>+8 dBu @ 0 dB gain, no pad<br>-7 dBu @ +15 dB gain, no pad<br>-22 dBu @ +30 dB gain, no pad<br>-36 dBu @ +45 dB gain, no pad |
| Phantom power        | +48 V, 10 mA per input, software selectable   |
| Audio performance    |   |
| EIN                  | -113 dBu  |
| System THD+N         | < 0.02 % @ any gain<br>input signal 3 dB below maximum  |
| Frequency response   | 20 Hz - 20 kHz  |

### MEB 114-S

|  |   |
|--|---|
| Transducer principle                           | pre-polarized condenser microphone                                    |
| Acoustic principle                             | boundary layer microphone   |
| Pick-up pattern                                | cardioid  |
| Frequency response                             | 40 Hz - 20 kHz  |
| Nominal impedance at 1 kHz                     | 200 $\Omega$  |
| Sensitivity                                    | 10 mV/PA  |
| Max. sound pressure level                      | 140 dB  |
| Equivalent noise level                         | 29 dB (A)   |
| Equivalent noise level rated as per CCIR 468-3 | 39 dB (CCIR)  |
| Dynamic range                                  | 111 dB (A)  |
| Phantom power                                  | P24-P48   |
| Current consumption                            | 5.3 mA  |
| Connectors                                     | Mic Out - tiny XLR-3M   |
| Logic out                                      | high level output voltage > 2.4 V<br>low level output voltage > 0.4 V |
| Logic in                                       | high level input voltage > 2.0 V<br>low level input voltage > 0.8 V   |

| Dante™ network     |   |
|--------------------|---|
| Physical level     | Standard Ethernet   |
| Connector          | Single RJ-45  |
| Cable quality      | CAT-5   |
| Transmission speed | 100 Mbps  |
| Daisy chain        | 2 units when powered by 802.3af PoE<br>3 units when powered by external +12 V DC power supply (Sennheiser NT 12-50CS) |

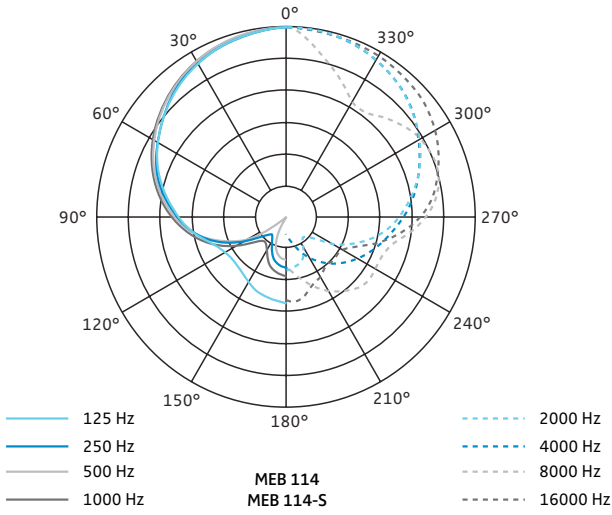
| Product properties     |  |
|------------------------|--|
| Power requirements     | Class 0 802.3af PoE PD compliant +12 V DC  |
| Power consumption      | 2.7 W (225 mA) @ +12 V DC, no phantom power<br>5.5 W (460 mA) @ +12 V DC, 10 mA phantom power load per input |
| Dimensions (W x H x D) | 219 x 38 x 120 mm<br>(8.63" x 1.50" x 4.74")   |
| Weight                 | 0.77 kg (1.7 lbs)  |
| Operating temperature  | 0 °C - 40 °C<br>(32 °F - 104 °F)   |

|                                |  |
|--------------------------------|--|
| LED light ring color           | red/green  |
| Microphone modes               | Toggle on / off<br>Push to mute<br>Push to talk<br>permanent on  |
| Connection                     | clip contact for logic   |
| Pin assignment logic connector | trigger signal at the logic connector:<br> Logic in (LED control)<br> GND<br> Logic out (switch signal) |
| Weight                         | 291 g  |
| Dimensions (W x D x H)         | 85 x 100 x 25 mm<br>(3.35" x 3.94" x 0.98")  |
| Operating temperature          | -10 °C to +50 °C<br>(+14 °F to +122 °F)  |

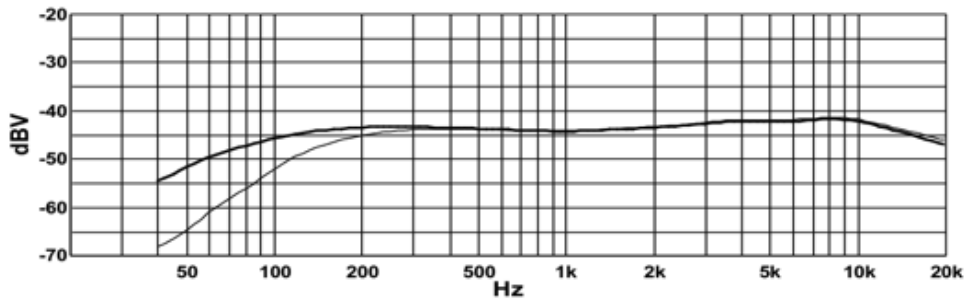


# Dante™ Kit MEB 114-S

## POLAR DIAGRAM MEB 114-S



## FREQUENCY RESPONSE MEB 114-S

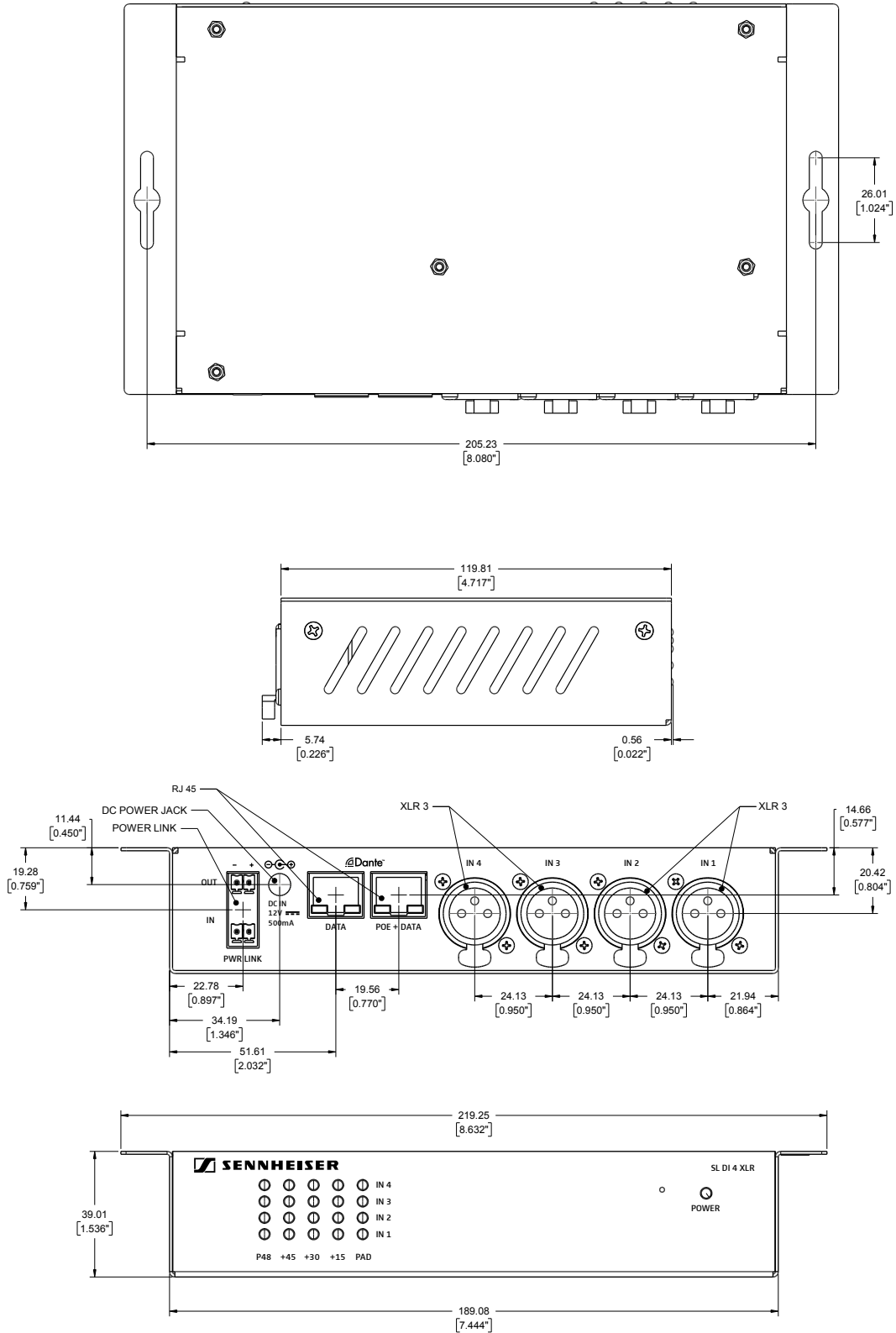




# Dante™ Kit MEB 114-S

## DIMENSIONS

### SL DI 4 XLR

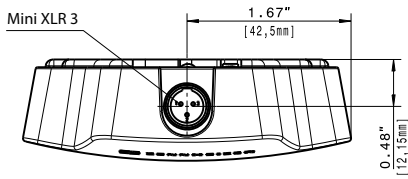
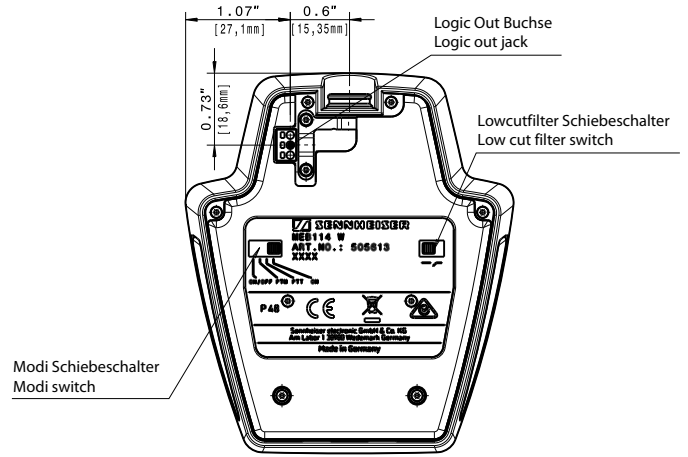
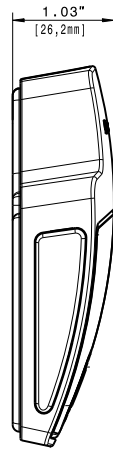
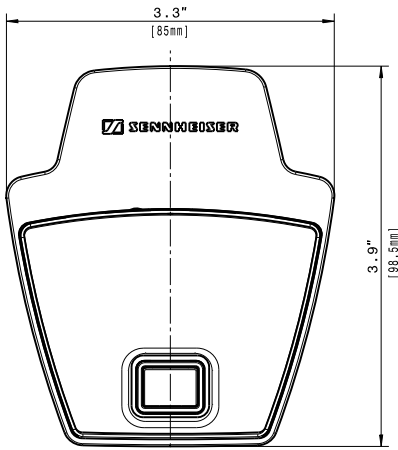




# Dante™ Kit MEB 114-S

## DIMENSIONS

### MEB 114-S





## Dante™ Kit MEB 114-S

### ARCHITECT'S SPECIFICATION

The Dante™ interface shall feature four balanced and RF filtered mic/line inputs on female XLR-3 connectors and two RJ-45 Ethernet connectors to allow Dante™ daisy chaining (DDC) of multiple units.

Audio frequency response shall range from 20 – 20,000 Hz. Input impedance shall be > 1.8 kΩ at any gain setting. Equivalent input noise shall be -113 dBu. The Dante™ interface shall be powered over the CAT5 Ethernet cable from an 802.3af PoE compliant network switch or from an external +12 V DC power supply. The unit shall support daisy chaining of two units when powered via PoE and shall accept daisy chaining of up to three units when powered via an external +12 V DC power supply. Power consumption shall be 2.7 W (225 mA) @ +12 V DC without phantom power and 5.5 W (460 mA) @ +12 V DC with a 10 mA phantom power load per input.

The Dante™ interface shall have a rugged metal housing with integrated mounting brackets; dimensions (W x H x D) shall be 219 x 38 x 120 mm (8.63" x 1.50" x 4.74"). Weight shall be 0.77 kg (1.7 lbs). Operating temperature shall range from 0 °C to 40 °C (32 °F to 104 °F).

The Dante™ interface shall be the Sennheiser SL DI 4 XLR.

The microphone shall be a cardioid pre-polarized condenser on-table boundary layer microphone designed for use in conference applications. The high-quality microphone capsule shall be optimized for speech intelligibility. The frequency response shall be 40 Hz - 20,000 Hz and sensitivity shall be 10 mV/Pa. Nominal impedance at 1 kHz shall be 200 Ω. Equivalent noise level shall be 26 dB(A) or 39 dB weighted as per CCIR 468-3. Dynamic range shall be 111 dB (A). Maximum SPL shall be 140 dB.

The microphone shall provide a tiny 3-pin XLR, a programmable microphone button (Toggle on/off, PTM, PTT and permanent on) and a bi-color LED ring for status indication. The microphone shall provide a TTL logic connector with logic inputs and outputs. The logic output voltage shall be high level > 2.4 and low level < 0.4 V, the logic input voltage shall be high level > 2.0 V and low level < 0.8 V.

The microphone shall operate on 48 V phantom power. Current consumption shall be 5.3 mA. The microphone shall have a rugged housing; dimensions shall be 85 x 100 x 25 mm (3.35" x 3.94" x 0.98"). Weight shall be 291 grams (10.27 oz). Operating temperature shall range from -10 °C to +50 °C (+14 °F to +122 °F).

The microphone shall be the Sennheiser MEB 114-S.